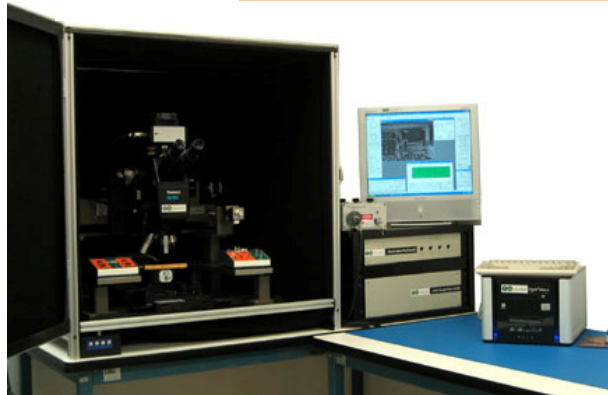


# Crystal Vision

## EIR CCD Camera



*Enhanced topside & backside photon emission analysis with advanced Liquid crystal and FMI thermal options*

### Features & Benefits:

XP Professional based OS – with advanced imaging functions:

Automated capture process simplifying emission capture and overlays.

Filter process for removal of hot pixel and cosmic ray noise

Calibration tables matched to the camera – increased sensitivity

Color overlays and multiple window views for emission comparison

Histogram and image math functions

12-bit Analog/ Digital hybrid enabling real-time imaging capability.

Patent Pending Stabilize Imaging for unsurpassed thermal sensitivity

Software control of illumination intensity

Liquid crystal and FMI modules available

Video feed out allows interface to existing probe station software

High Sensitivity Extended IR CCD Sensor (visible to NIR range)

Excellent anti-blooming characteristics

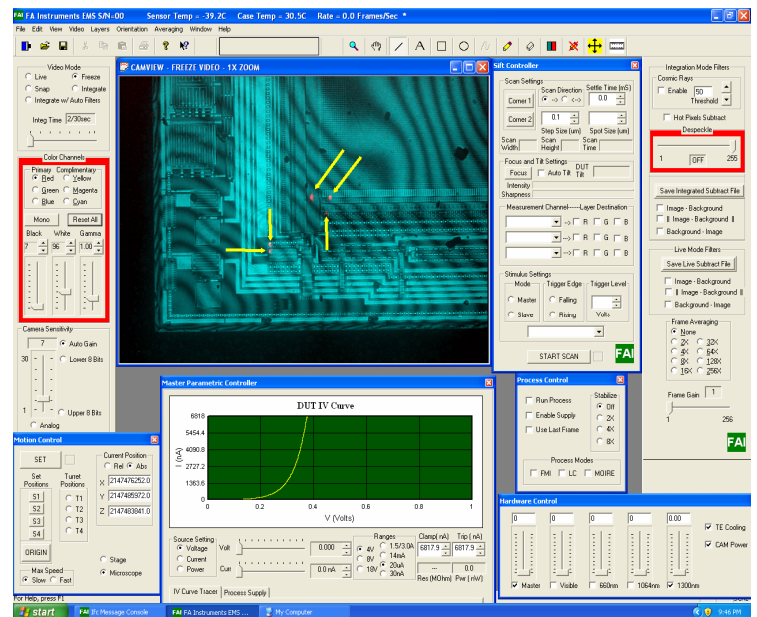
Pixel by Pixel correction

High-resolution and low dark current

Parametric control head option for biasing

Air-cooled camera with typical 60°C Differential (-35 to -45°C at the sensor)

640x480 real time integrating camera from 32 msec – 2 hours



Tester-based



Probe Station



Bench-top

**Versatile mounting options for portable or dark box based systems**